



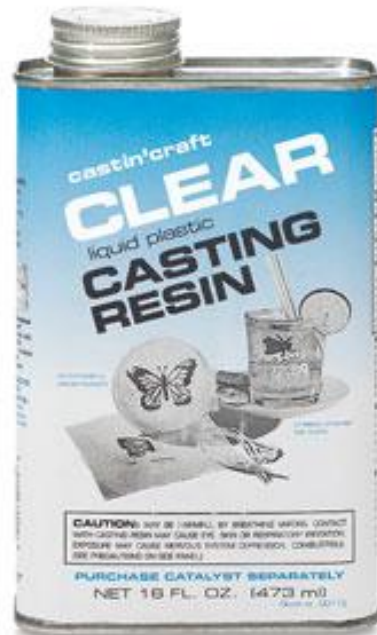
Red River Pens . . .

handmade ~ one at a time

Welcome to a world of finely handcrafted writing instruments made from exotic woods, acrylics, plastics, antler, and rattlesnake skin. Enjoy the ease of shopping on our secure site. Know that your purchase is one-of-a-kind, made *personally* for you.

Don Ward Wichita Falls, Tx

Casting Pen Blanks



Two popular brands of polyester resin used to cast penblanks. On the left is Silmar 41 and on the right is Castin' Craft polyester resin.



Acrylic type: polyester resin
These blanks and several other
homemade and imported resins
are available from Exotic Blanks
at <http://www.exoticblanks.com>



Acrylic Type: Polyester Resin
Eco Friendly© blanks (©2008 BG Artforms)
Beer caps, cigar labels, watch parts
Blanks and Pens by Barry Gross
Used with permission



<http://www.bgartforms.com>



More pens by Barry Gross

**Eco Friendly© blanks (©2008
BG Artforms)**

**Beer caps, cigar labels, watch
parts**

**Blanks and Pens by Barry
Gross**

Used with permission



Jr. Statesmen in Magma Red and Crystal Clear Cactus

© Curtis O. Seebeck, 2009



TurnTex
Woodworks
TurnTex.com

Acrylic type: Alumilite
Cactus skeleton and wood pieces



Copyright © 2008 TurnTex.com

Blanks and pens made by Curtis Seebeck
Used with permission



Acrylic Type: Polyester Resin

Colorant: Mica Powders

Made by Jonathon Brooks

www.Pourmepenworks.com

(Hopefully up and running June 2010)

IAP user name: Brooks803

Email:

Jonathon@pourmepenworks.com

Pictures used with permission

Contact info given with permission





Acrylic type: Polyester resin with feathers embedded
The Fantastic Feather© blanks are made by John Underhill and are sold exclusively by Exotic Blanks via their website at <http://www.exoticblanks.com>



**Colored resin chips
and slices**



Coffee beans



**Amalgum Mutt blanks
msde by Eugene Soto and
sold in the classifieds on
IAP at
<http://www.Penturners.org>
The resin used is alumilite.
Cast materials include
coffee beans, pasta, burl
caps, banksia Pods, acorns,
and other materials**

Images used with permission.



Pasta



**Colored resin chips
and slices**

More blanks by Eugene Soto cast in alumilite.



acorns

Burl caps

Banksia Pods



**Mona Lisa blank
By Bruce Robbins**

**Snake and stamp
Blanks by Don Ward**





Real or Memorex? Two of the three pens above are real Skins and one is a computer label.



How are the colored blanks made?

The best article I've read outlining how to cast polyester resin for making pen blanks was written by Richard Greenwald and can be found on his website at

<http://richardlgreenwald.com/docs/CASTING%20POLYESTER%20RESIN.pdf>

Richard also sells his homemade blank and pen parts for making custom pens. Check it out at <http://richardlgreenwald.com>

**Another excellent article can be found here:
http://www.jaxturners.org/tech/casting_with_polyester_resin.pdf**

Google “casting polyester resin” and enough material will be found to keep you busy reading for hours.

Colored, dyed, and swirled blanks

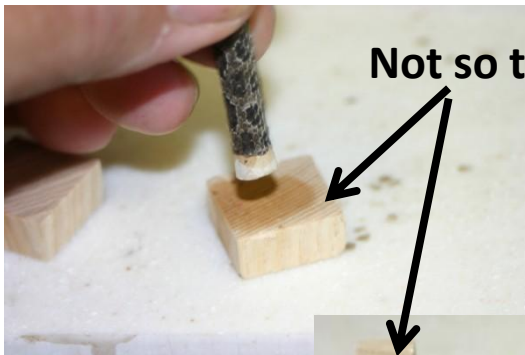
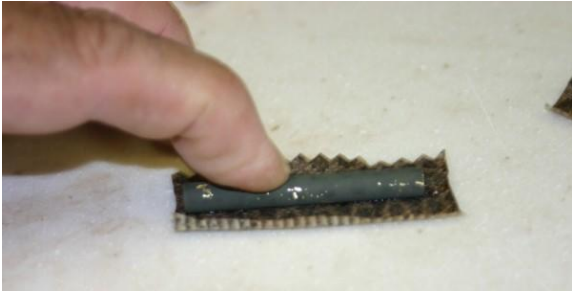
Dyes come in liquid and powder.

Opaque and transparent.

Plain, Pearl, Luster, Fluorescent, Phosphorescent

What is needed and how are the clear cast blanks using snake skins, computer labels and other material made?

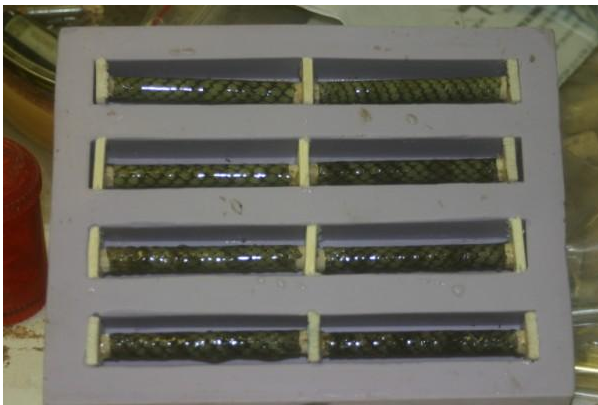




Not so thick!

**I now use paint
Stirring sticks**

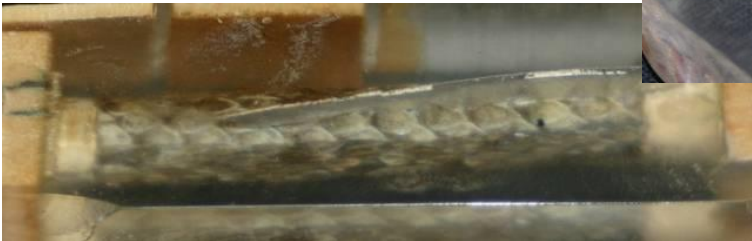
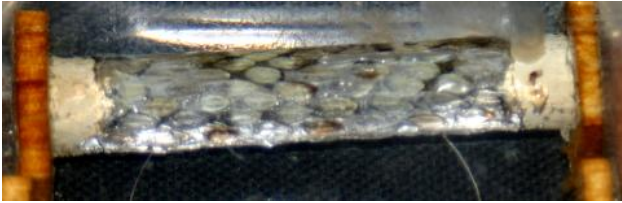




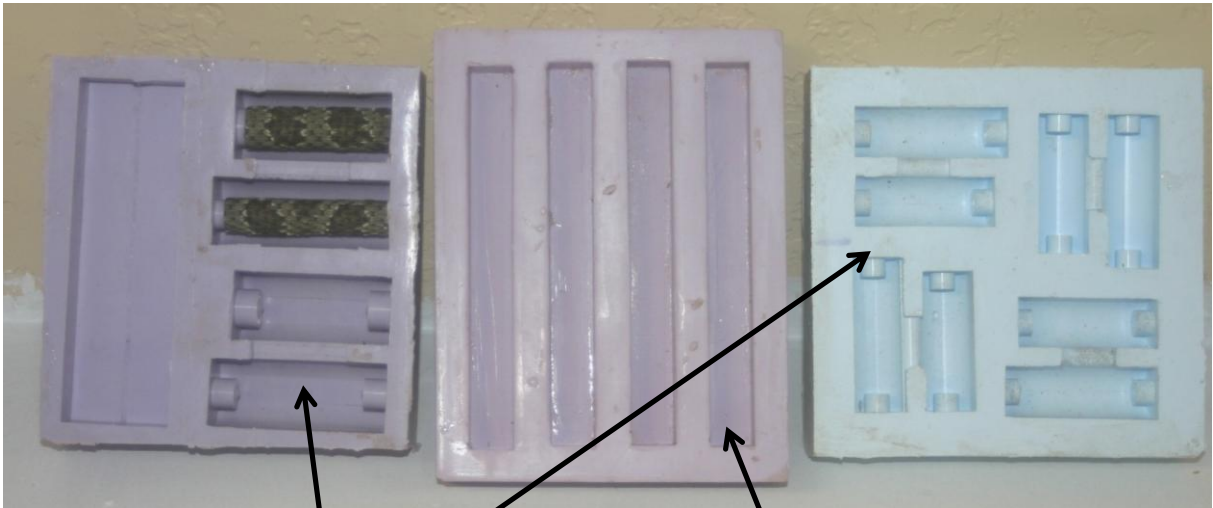
I now use small throw away brushes and paint raw PR onto the skins as I put them into the mold.

I also stuff the tubes with play play dough leaving enough room for corks or plugs.

Air is the enemy!

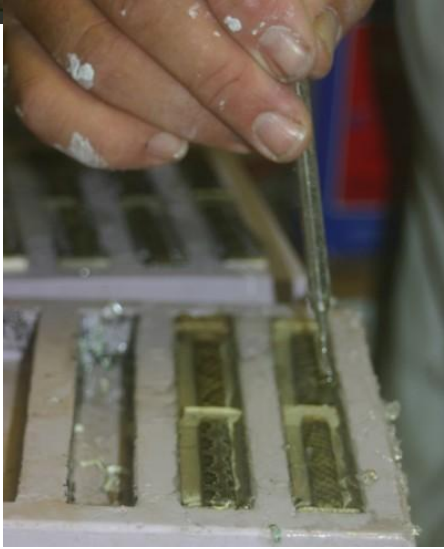


And heat!!



**Resin saver
molds available
from NewLondon88
on IAP...one mold per
pen kit (kit specific)**

**slot type molds available
from gadget on IAP...these
molds make blanks like we
purchase...the come in 5/8,
3/4 and 7/8 inch widths.**











The individual labels are built using a photo editor such as Photoshop by Adobe. Others are available and even a free Photoshop work alike is available called Gimp and available from <http://www.gimp.org/>

I first figure out the size of the label for the kit I'm using. I build the label placing each element on a separate layer so they can be manipulated for the best placement.



For labels I use white and allow the paint to dry for a day or two



For snake skins I use deep forest green ultra flat and allow it to dry for a day or two.



**Avery #18163
2" x 4" or
Avery 5165 full
sheet Labels.**



Other brands may work but I know some who complain of labels lifting off the tubes. I hear of fewer failures with Avery labels. I've had no label failures using Avery labels.



Stamp images were copied from the internet. Real stamps can be used or scanned.



Tips for turning acrylics

Sharp tools

Light cuts

Remove corners

With band saw or

Disk sander

Use your favorite tool.

Gouges may be a bit aggressive.

Roughout gouge to round the blank

Skew to take it down

Round nose scraper to completion



Tips for turning acrylics

Sand 320 to 400

Wet sand with micromesh

Wet sand with Acrylic and Polishing kit



The ultimate fine abrasive. This special cloth/rubber based "sandpaper" goes to 12,000 grit. Each package contains (9) 4" x 3" and a special rubber pad. Grits are 1500 to 12,000.

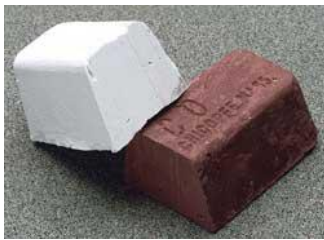


There are 6 different abrasive grits:
600; 800; 1,500; 2,400; 4,000; and 12,000.

Images on this page use with the permission of The Berea Hardwoods Co. Inc.
<http://www.bereahardwoods.com>

Buff with your favorite dry or liquid buffing compound

Tripoli and White Diamond



HUT UltraGloss Plastic Polish



Novus Plastic polishing kit



Flitz

