



VOL 5/17

PRESIDENT'S REPORT

MAY 2017

Hello again. Welcome to the May edition of Talking Turning.

For those who are participating, AWTEX is nearly upon us. If you have not submitted your entries it is now too late as the closing date was Friday 19<sup>th</sup> May. I did not learn from our immediate past president and have put down on the entry form more items than I have finished. A couple I have not even started and one I would like to redo completely!



At the May meeting we will be asking for a show of hands of those who will be entering items at AWTEX. This will help us plan for the June meeting where we normally discuss the items submitted. We also need to know who would like to take up the offer from Rachelle to collect items from the clubrooms on Monday 12<sup>th</sup> June.

Can I remind you that the raffle ticket books taken for AWTEX will need to be handed in at the May meeting along with any money outstanding.

The committee has continued with accepting the offer of displaying our work at the Whitehorse Library. Normally there is an abundance of work that can be taken from AWTEX straight across to the library. That will not be possible this year. If you have any work that can be put on display could you please bring it along to the June meeting. It would be disappointing to lose the opportunity to display because of lack of items to fill a cabinet.

A mystery bag has been left in the shed containing a number of chucks including a collet chuck and some other tools. No one on the committee knows whether it is a donation to the club or if someone has left it behind. If you can shed any light on the matter can you please let us know.

I will finish off with a safety tip.

### ***Never grind an old file to use as a chisel.***

Files are manufactured to be very hard allowing them to hold an edge. On the downside the hardening causes them to be very brittle. At the May meeting I will relate the tale of a double fatality caused by someone who was unaware of the dangers.

I look forward to seeing you at the May meeting.

Richard Jardine.

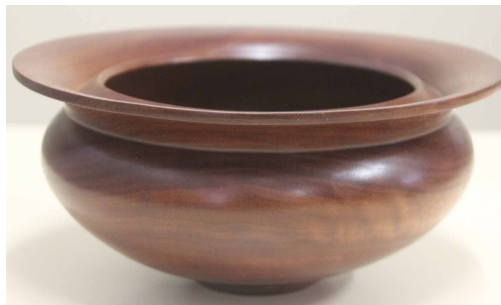
APRIL SHOW & TELL led by MAX GREGORY



Richard Jardine has turned a bud vase from Casuarina; finish at present is just sanded.

He has had one success with a thin platter from a Eucalypt kitchen-door panel (and one failure!). He used a glued-on spigot because of the wood's thinness. The finish is Livos natural oil.

He also brought a container in Yellow Box with a Spotted Gum lid and Victorian Ash handle. Defects were filled with super glue and coffee grounds, finished with Glow.



Jim Pagonis' showed two Forest Red Gum bowls, turned while still green, and finished with Rustins Danish oil.

The walking sticks are: -

Ebony with Huon Pine handle and Fiddleback Blackwood (2)

All are finished with Rustins Danish oil on the shafts, and Rustins 2-part plastic, for durability, on the handles.



Rick Hillier's winged container was turned from Osage Orange, finished with Aussie oil.

The Protea vases are also finished with Aussie oil.



Alan Thompson's Christmas decoration incorporates a very delicate sea urchin with a Sugar Pine shaft. The shaft is finished with Danish oil.



David Caddy has turned another piece of salvaged Oregon (old carport roof beam) into a bud vase. The finish is Shellawax.



Val Dalsanto is making a pair of Myrtle lidded bowls, one already finished with beeswax. The goblet is Claret Ash with a Red Gum lid, finished with beeswax.

The bowl is Myrtle, also finished with beeswax. The pair of "wobbly" birds in-progress are turned from Claret Ash.



Joe Walker made this lidded container from Walnut, with a very fine turned handle. It is finished with EEE and Shellawax.



Mal Jackson turned this bowl from Walnut burl, finished with Danish oil.

Roger Annells made a bowl from an unidentified wood, but it escaped the photographer! Sorry Roger.

APRIL DEMONSTRATION by CHARLES MERCER  
or... "Charlie and the Pewter Factory".

Charles has become the Guild's resident expert on pewter. Pewter is a silver-grey, malleable metal alloy, containing 85-99% tin, with the remainder being copper, antimony and bismuth. In the past, pewter containing up to 4% lead was used for items such as jugs, coffee and tea pots, sugar bowls and platters, and often silver-plated. Modern food items now have no lead. Lead pewters are heavier, and tarnish faster to a darker grey. Pure tin has a melting point of 232C, but the alloying elements can lower the melting point of pewter to 170C.



Most of Charles' raw materials are sourced from opportunity shops, and he is giving a new lease of life to those 1970's sets of pewter drink-ware! He particularly recommends Selangor pewter, manufactured in Malaysia – it has a high tin content. He avoids darker or heavier items.

The first step to melting down pewter for casting is to cut the cups/tankards/jugs/etc. into postage-stamp-sized pieces. This can be done safely on a bandsaw as long as round objects are first presented to the blade so that they cannot roll, and held with something like locking grips. During the cutting process, he sometimes rescues tall or short pillars or feet, which could be, added whole to wooden turnings. He puts the cut pieces in a stainless steel saucepan, or in his preferred "crucible" – a cast-iron skillet. He has had to make up a steel tube removable handle, as the integral cast handle becomes too hot to hold.



Melting is done on a camping gas cooker, with afterburner applied by a propane torch. The metal melts quite quickly, and remains liquid comfortably long enough to pour into several moulds. A layer of oxidised slag remains on top of the molten metal while pouring.



Charles cast a ring to be a rim for a bowl, and a handle for a lid. A pewter rim could be either the narrow decorative edge of a bowl, or be wider and have a lid rebated in. The ring is cast in a groove turned in the flat face of a piece of Red Gum, and the knob handle in a cylindrical hole in the end of a blank. When the molten metal is poured in, the mould has to be stable, and flat, particularly for a ring – a spirit level would help. The groove or hole do not have to be finely finished, as some machining of the pewter casting takes place while it is still locked in the mould.



**Note :** Molten pewter should not be allowed to come into contact with water, or wet wood. Even with a “dry” wood mould, there is considerable smoke and bubbling as any residual moisture and other volatile remnants escape. Depending on its size and thickness, a pewter casting may take up to 30 minutes to cool before further work can be done.

Using a wooden mould plus ring he had prepared earlier, Charles demonstrated flattening the top surface of the pewter, which will become the lower edge glued to the rim of a bowl. In order to provide a positive location onto the wood, as well as increase gluing surface area, Charles rebates the outer edge of the pewter, and will turn a corresponding rebate on the inner edge of the bowl. Once he has trued up this mating surface on the pewter, he turns away the top surface of the mould wood until the ring can be easily removed without bending it.



He attaches the pewter rim to the partly turned bowl with super glue, and then completes turning the bowl and rim together. For a knob or handle, he turns away the outer end of the mould and some of the pewter to form a spigot, and then holds this in a four-jaw or Jacobs chuck to form the desired shape.



Charles uses scrapers and parting tools to shape pewter, and has ground a semi-circular end on an old wood chisel for this purpose. He polishes the pewter with 400-1200 sanding pads, and finally with car polish.



## UPCOMING EVENTS

### **MAY MEETING**

- 27<sup>th</sup>. May  
**Demonstration.** Cliff Walsh will be our demonstrator this month. He will be demonstrating how to resurrect a bowl with a hole in the bottom. Also demonstrating the Dick Singh insert system and how to use hot melt glue and aluminium blocks to mount objects on the lathe.
  
- June meeting. AWTEX entries discussed and possible chuck cleaning demonstration.
  
- AWTEX Kingston City Hall. 985 Nepean Highway. Moorabbin.  
 Friday 16<sup>th</sup> June            10am to 6pm.  
 Saturday 17<sup>th</sup>. June       10am to 5pm.  
 Sunday 18<sup>th</sup>. June        10am to 4pm.
  
- The **Alcove Art Shop** is the gallery where some of the Guild members are selling their items. The gallery is holding an **“Autumn Artistry” sale** where a huge range of local artisans is showcasing their handmade items. This includes textiles, ceramics, paintings, sculptures, woodwork and cards. The items highlight special colours and textures of autumn. This special exhibition runs from 15th May to 28th May.  
 Members are asked to make special mention of the exhibition for their family and friends. A great opportunity to pick up something special for someone in their lives.  
 The Gallery is located at the Box Hill Community Arts Centre, 470 Station Street, Box Hill.  
 The gallery is open Monday to Friday 10am to 4:40 pm and 11am to 3pm on the weekends.
  
- September 17 Schwerkolt Cottage  
 The following was received from the convenor for the Heritage day at Schwerkolt Cottage  
 The theme this year is "Remember the Old School Days" and we were hoping your group would be able make and sell some items in line with the theme. We have had several suggestions which may or may not be practical and one suggestion was that your group may be able to make simple "Knitting Nancy" (French Knitting) which would tie in with the textile exhibitors that come each year.

## NOTICES

### ➤ RAFFLE TICKETS

Please return your raffle tickets with monies to Geoff Easton at the May meeting.

### ➤ AWTEX

Rachelle has offered to pick up your entries from the Cottage on Monday 12<sup>th</sup> June. If you are interested in this offer please let Richard know at the May Meeting. **Please note** that your entries will need to be packed as if they were being sent in the post, as she does not want to be responsible for any damage in transport.

### ➤ **Alcove Gallery.** If you wish to submit items for sale at the Alcove Gallery bring your items along at May meeting and give them to Geoff Easton. Also provide Geoff with a sheet with your name, description of the piece, timber and price. Remember the Alcove takes 25% and the guild 10%. Maximum of three items per member.

### ➤ Di Bermingham prepared a very impressive display of Guild woodturning at the floral art society function held on 3rd May at Knox Community Art centre. Whilst not many sales were made, most visitors were very impressed with the quality of the items displayed.



### ➤ Having trouble accessing old video heads. Cliff Walsh has an alternative, turned aluminium discs available in various sizes. \$4 each. Cliff will be demonstrating their use at the next meeting.



**KOONUNG WOODTURNERS  
GUILD INC.**  
Promoting Excellence and Fellowship  
in Woodturning  
Reg. No. A0033752T

**2015/2016 Committee**

President	Richard Jardine	15 Cunningham St. Box Hill	9890 9201
Vice President	Mal Jackson	24 Chivalry Av. Glen Waverley	9803 3742
Secretary	Ian Absolom	28 Somers St. Mitcham	9874 6776
Treasurer	Geoff Easton	10 BurnettSt. Mitcham	9874 3002
Committee;	Tony Zammit	59 Pine Rd. Mooroolbark	9728 5203
	<i>Tim Denyer</i>	<i>2/137 Charman Rd. Beaumaris</i>	<i>9684 1139</i>
IPP	Graham Besley	9859 5777	
Newsletter Editor	Rick Hillier	e-mail: <a href="mailto:eric.hillier1@gmail.com">eric.hillier1@gmail.com</a>	

The Koonung Woodturner's Guild meets at 9.00am  
on the fourth Saturday of each month at 109  
Koonung Road Blackburn North 3130



Open Laminated  
Cliff Walsh  
Australian Woodturning Exhibition 2016

If unable to deliver please return to Richard Jardine 15 Cunningham St. Box Hill 3128